



Cambridge
Biomedical Campus

CBC Open Forum

Nick Kirby

Managing Director, CBC Ltd

15 July 2024

abcam

AstraZeneca 

 **Cambridge**
Biomedical Campus


Cambridgeshire and Peterborough
NHS Foundation Trust


Cambridge University Hospitals
NHS Foundation Trust

 **MRC Laboratory of Molecular Biology**


Royal Papworth Hospital
NHS Foundation Trust

 **UNIVERSITY OF CAMBRIDGE**

 **CANCER RESEARCH UK**

 **wellcome-MRC
cambridge stem cell institute**

 **CCTU**
Cambridge Clinical Trials Unit

 **NIHR** | Cambridge Biomedical Research Centre

 **CIMR**
Molecules Mechanisms Medicine

 **MRC Mitochondrial Biology Unit**


 **gsk**

 **MILNER**
THERAPEUTICS INSTITUTE

 **IMS** Wellcome - MRC
Institute of Metabolic Science

 **CITIID**

Welcome

-  Summer on Campus
-  Cambridge Cancer Research Hospital
-  CBC Ltd Housing Report



Creating and celebrating a community on Campus

Jobs and Careers Fair

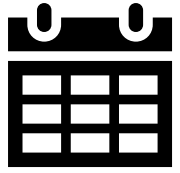
29 June 2024



Campus Picnic

10 July 2024





Summer on Campus: dates for your diary

- **Campus Choir** – every Wednesday
- **Open Mic** – Friday 16 August
- **Cambridge Wellness Festival** - Tuesday, 10 September 11am – 6pm Green and Gardens
- **Powerhouse Games** – Weds 11 Sept
- **Fun Run** - Sunday, 1 September



Summer on Campus

- Events during the summer
- Regular campus activities (open to all)

11 SEPTEMBER
INCLUSION GAMES

EVERY WEDNESDAY
CAMPUS CHOIR

29 JUNE
JOBS FAIR

15 JULY
OPEN FORUM

1 SEPTEMBER
FUN RUN

10 JULY
PICNIC

16 AUGUST
OPEN MIC NIGHT

10 SEPTEMBER
WELLNESS FESTIVAL

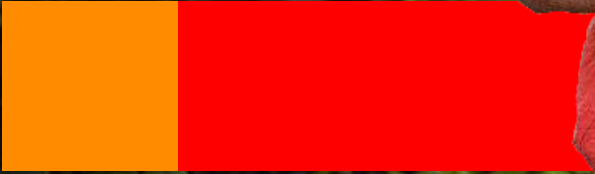
**Sign up to our
newsletter to be
the first to hear
about upcoming
events**





Cambridge
Cancer
Research
Hospital

**CHANGING
THE STORY
OF CANCER**



OUR MISSION

Cancer is one of the biggest killers in the developed world. 130,000 people die of cancer in the UK each year.

The NHS Long Term Plan has the ambition to:

“Save thousands more lives each year by dramatically improving how we diagnose and treat cancer – our ambition is that by 2028, an extra 55,000 people each year will survive for five years or more following their cancer diagnosis.”

We’re building a new kind of cancer research hospital in Cambridge, which has been in the planning for over a decade.

It will bring together clinical expertise from Addenbrooke’s Hospital with world-class scientists from the University of Cambridge and the Cancer Research UK Cambridge Centre, within the walls of a new NHS hospital – for the first time.



WHY CAMBRIDGE?

- Cambridge is a unique place where we can change the story of cancer.
- The city is home to the largest life sciences cluster in Europe and a community of cancer researchers.
- By bringing the lab bench to the patient bedside, we will accelerate the translation of scientific discoveries into cutting-edge patient care.
- The capsule sponge was invented and refined in Cambridge and is now on clinical trial with NHS patients. It is known as the pill-on-a-thread and is a quick and simple test for Barrett's oesophagus, a condition that can be a precursor to cancer.
- Anything invented at the Cambridge Cancer Research Hospital will be in partnership with the NHS and will go directly into NHS care, to be rolled-out across the UK.



HOW THE HOSPITAL WILL CHANGE THE STORY FOR CURRENT AND FUTURE CANCER PATIENTS...

- We will use real-time data gathered during a patient's treatment, and combine it with whole genome sequencing and AI technology to deliver personalised care for each individual.
- The experience of patients will be better in the new building; they will stay in single rooms which helps to lower the risks of infection, as well as offering better privacy and sleep.
- Improved facilities for virtual clinics to allow more patients to have remote consultations, so less time is spent in hospital.
- Increased access to clinical trials.
- The University's research areas in the hospital focus on early cancer, precision breast cancer and integrated cancer medicine. We want to detect cancer months, or years, earlier, which will save lives and avoid the need for expensive and intensive surgery, radiation and chemotherapy.

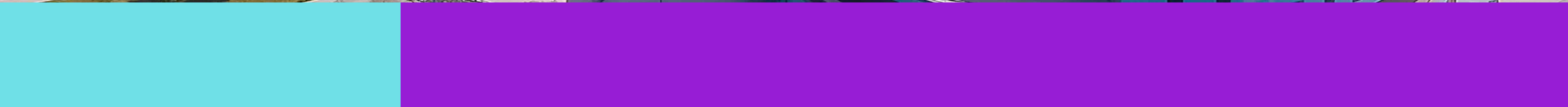
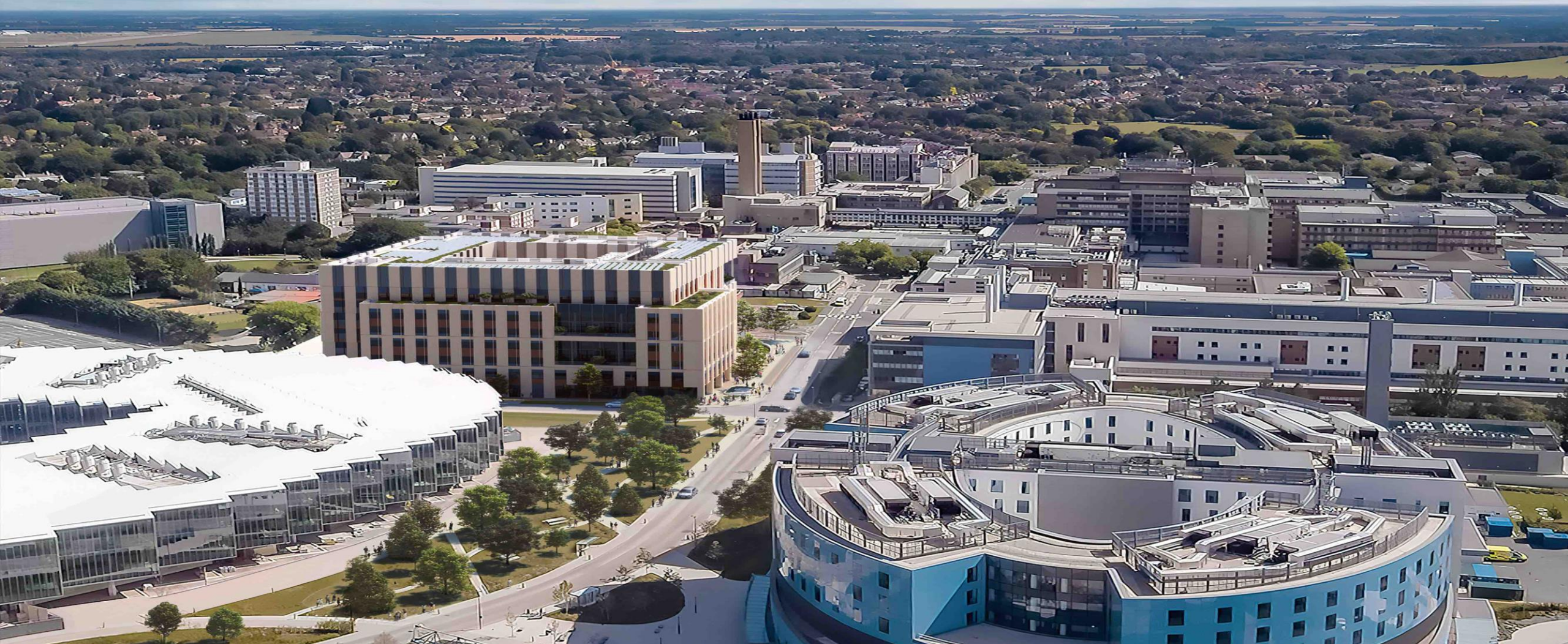


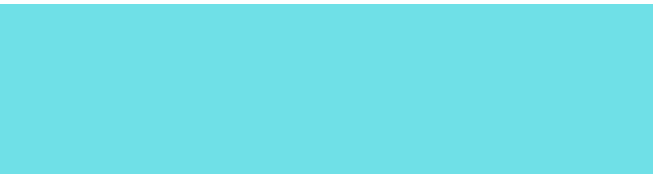
PROJECT PROGRESS SO FAR

- In 2021, the Strategic Outline Case for the hospital was approved.
- In May 2023, the Secretary of State for Health and Social Care confirmed the hospital would be funded as part of the New Hospital Programme.
- In August 2023, our Outline Business Case was approved by the construction partner Laing O'Rourke appointed.
- In April this year, Cambridge City Council granted planning permission.
- We are currently in RIBA (Royal Institute of British Architects) Stage 4 – the technical design stage. The hospital is being designed by staff and patients at every stage.



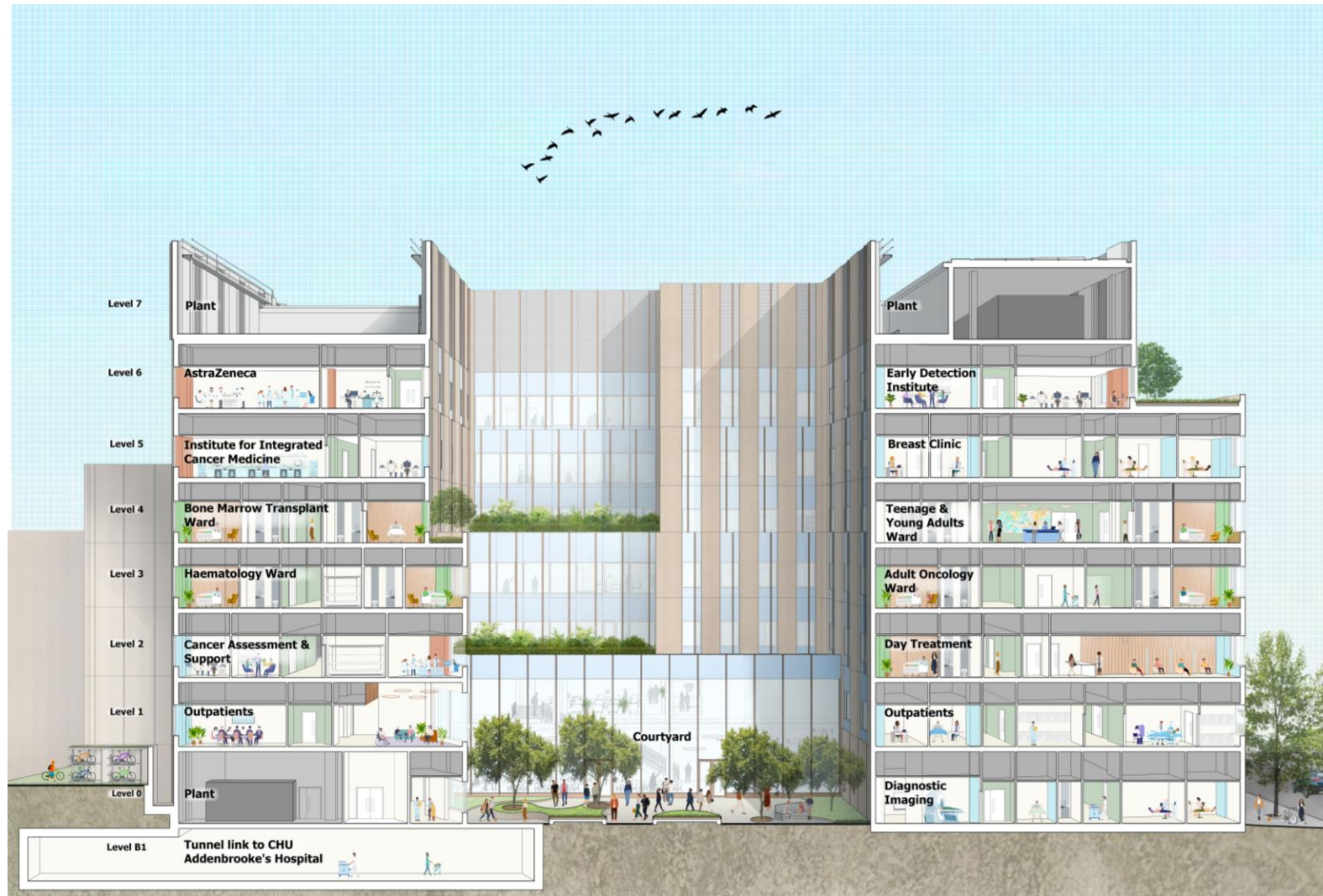
ARCHITECT IMAGES - THE HOSPITAL IN THE CAMPUS







WHAT'S IN THE BUILDING



- 77 single inpatient bedrooms in wards for oncology, haematology, bone marrow transplant and a teenage / young adult ward
- Day units for oncology and haematology
- Cancer Assessment Unit for patients to avoid the emergency department for urgent care
- Outpatients, imaging facilities, pharmacy, gym
- Breast unit
- 3 x University of Cambridge research institutes

LOOKING AHEAD...

Autumn 2024

Enabling works to begin on site

Early 2025

Full Business Case submission for approval

2025 – 2028

Construction of the hospital

2029

The hospital is expected to open



IF YOU'D LIKE TO BE INVOLVED

We are co-producing the hospital, which means we work closely with current or former cancer patients and their families, as well as staff and other stakeholders to make sure we build the best hospital to meet everyone's needs.

If you are interested in using your experience to develop the hospital, please visit our website –

www.cambridgecancer.org.uk



WATCH

We're changing the way we detect and treat cancer

Working with our patients

The Cambridge Cancer Research Hospital will bring together clinical and research expertise in a new world-class hospital designed in partnership with our patients. We will detect cancer earlier, treat it more precisely and save more lives.

[Read more](#)

**CHANGING
THE STORY
OF CANCER**





Cambridge
Biomedical Campus

A housing report for Cambridge Biomedical Campus

How we have approached housing

- **Not just a CBC challenge**
- **Evidence based approach:**
 - Staff survey (12.5% of our workforce responded)
 - Employment data (disaggregated by sector)
- **Engagement with experts in local government and Homes England**
- **Commissioned external expertise to analyse data**
 - Real world affordability
 - Expected population growth
 - Sustainable travel times
 - Case studies

The affordable housing need - headlines



38%

of workers at CBC describe their ability to meet current housing costs as 'moderately **stretched**' (27%) or 'very stretched' (11%)



30%

of CBC workers are currently **unable to afford** rents in the open market and are therefore in need of affordable rented housing.



1/5th

fall in a **squeezed middle** group of being able to afford to rent and not eligible for help, but not being able buy a home despite most – 70% – wanting to.



**14,000-
16,000**

affordable homes needed to meet current and future needs of CBC employees. **9,000** affordable rented homes plus **5-7,000** intermediate tenure homes.

The majority of the need exists now

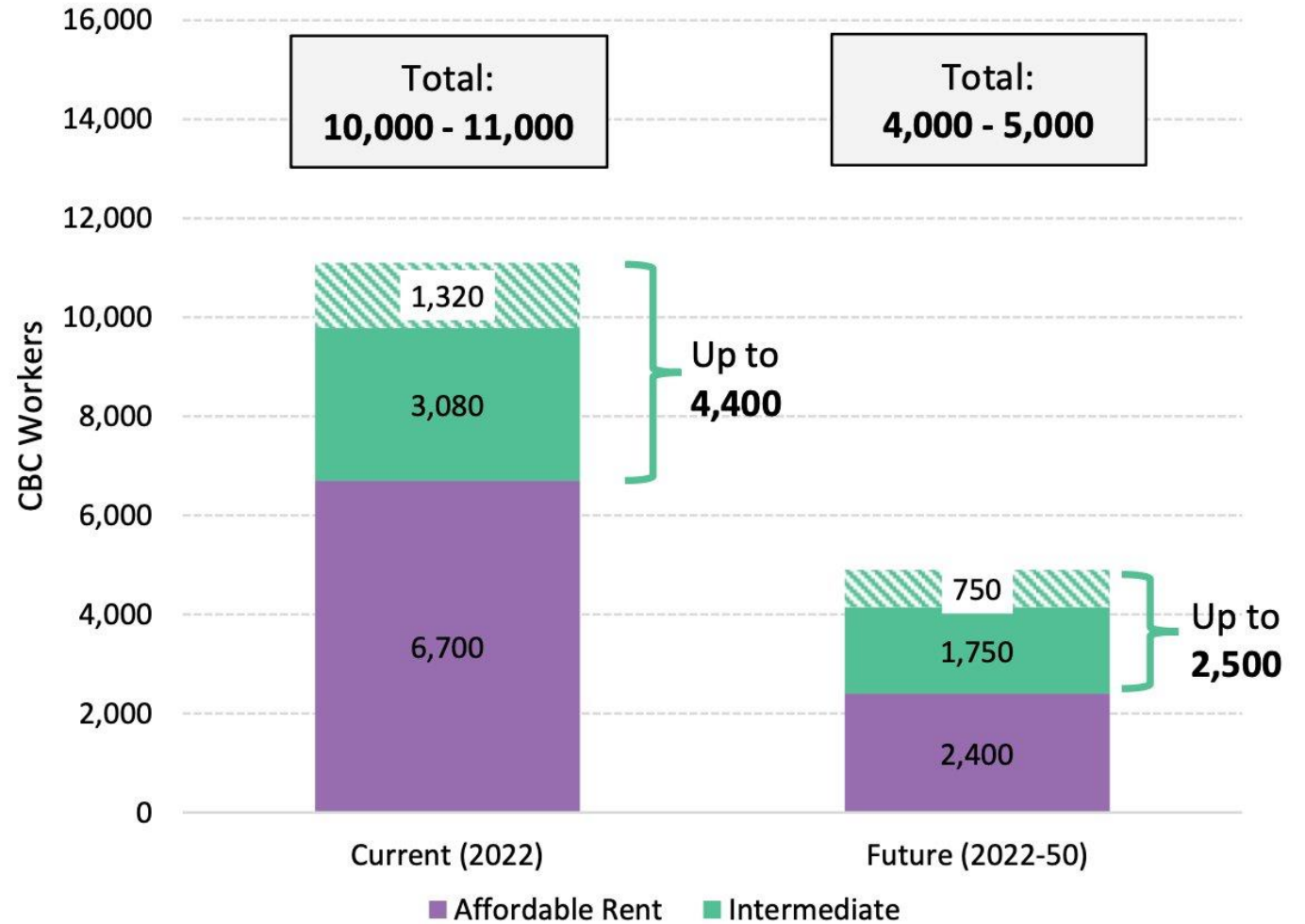
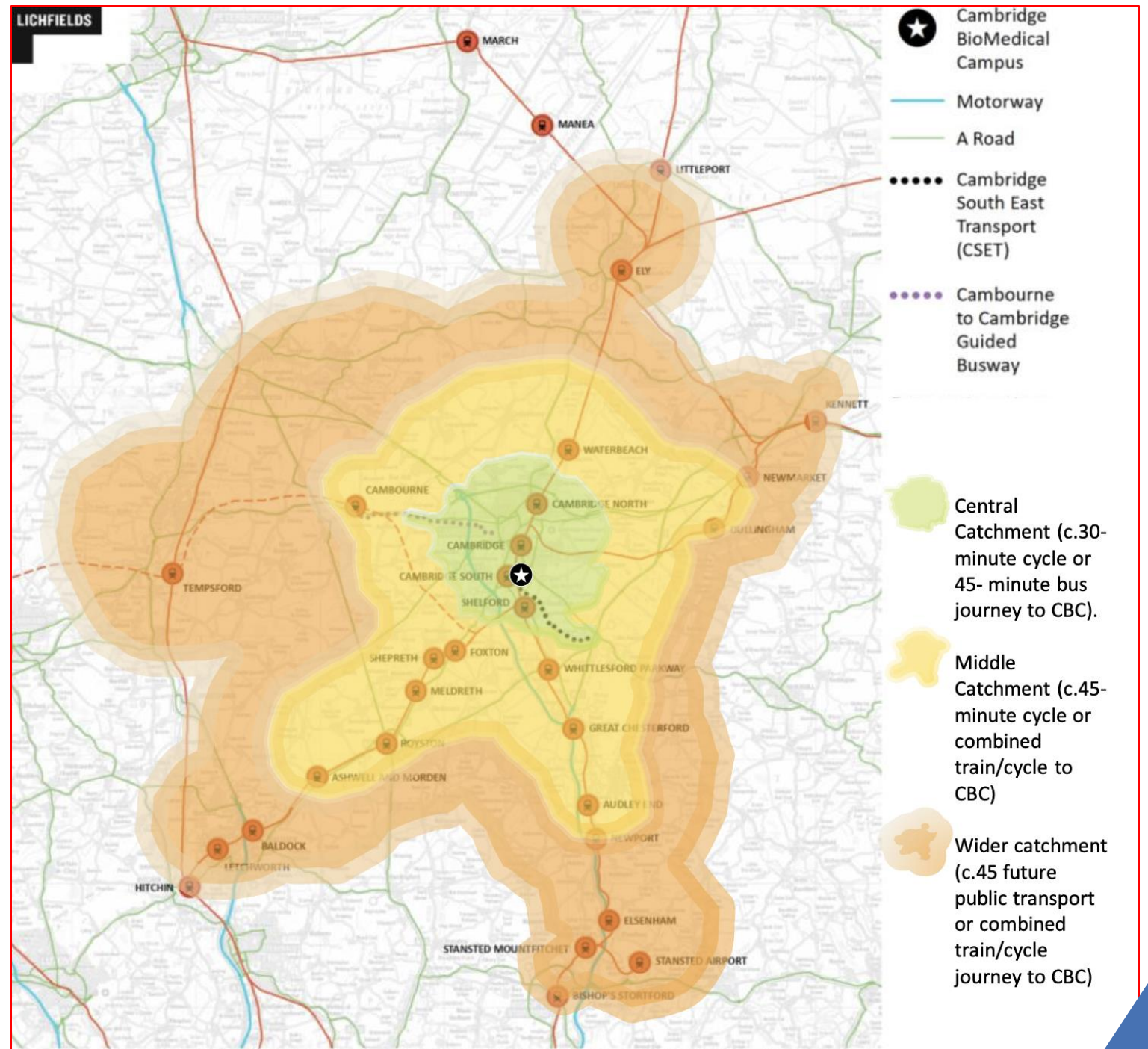


Figure 29: Total affordable housing need at CBC (Source: Lichfields. Figures rounded)



The report identifies travel to work area based on a maximum 45 minutes commute by sustainable mode of transport

It does not identify any individual site as superior to another



Coming up with solutions

1

WORK
WITH PLANNING AUTHORITIES
AND LOCAL GOVERNMENT

2

MAKE CLEAR ASKS
OF DEVELOPERS PLANNING NEW
HOUSING DEVELOPMENTS

3

ENGAGE WITH LOCAL PEOPLE
WHERE WE TAKE AN INTEREST IN A
NEW DEVELOPMENT

4

DEVELOP AN IMPROVED
HOUSING OFFER ON THE
CURRENT CAMPUS



Cambridge
Biomedical Campus

DOWNLOAD THE REPORT

SCAN
ME



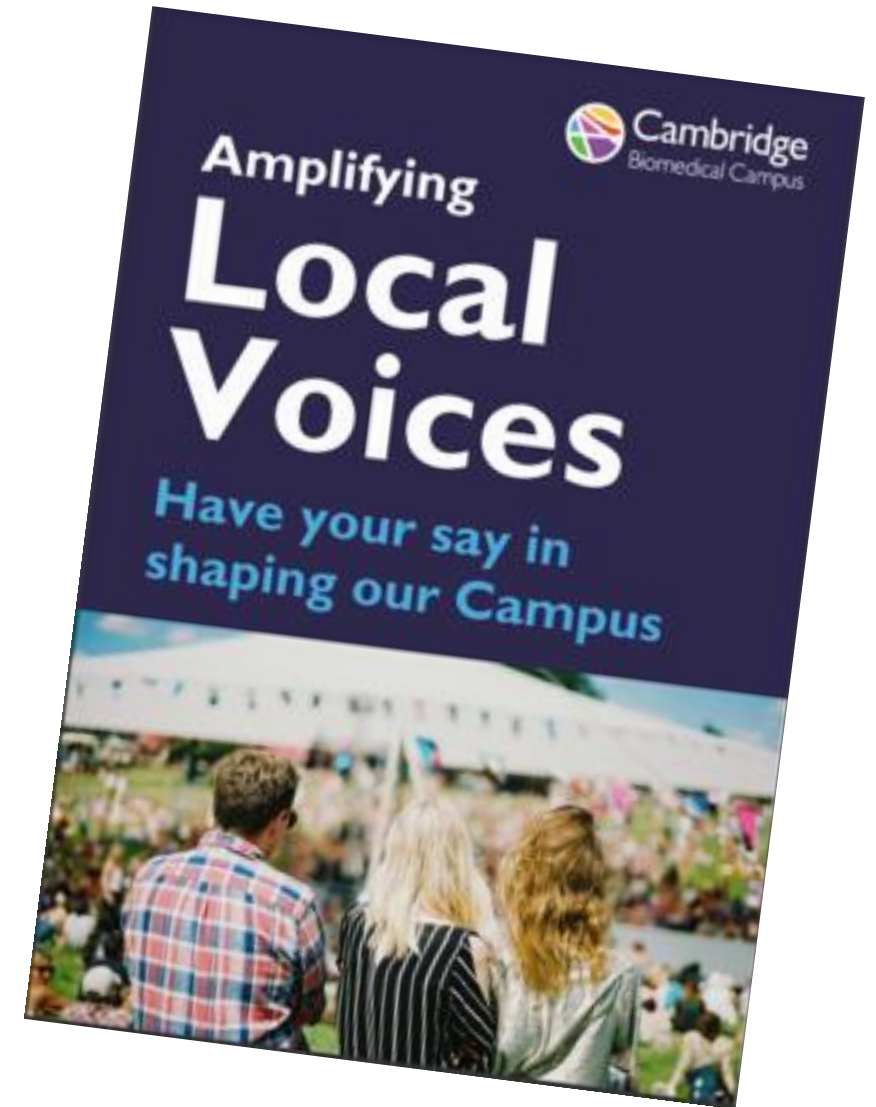


**Any
questions?
comms@cuhp.org.uk**

Help us build a Campus that works for everyone

Become a Local Voice!

Making the Campus a better place to work, visit or live beside





Cambridge
Biomedical Campus

Thank you



@CamBioCampus



cambridgebiomedicalcampus



cambridge-biomedical-campus

Sign up to our newsletter

SCAN

